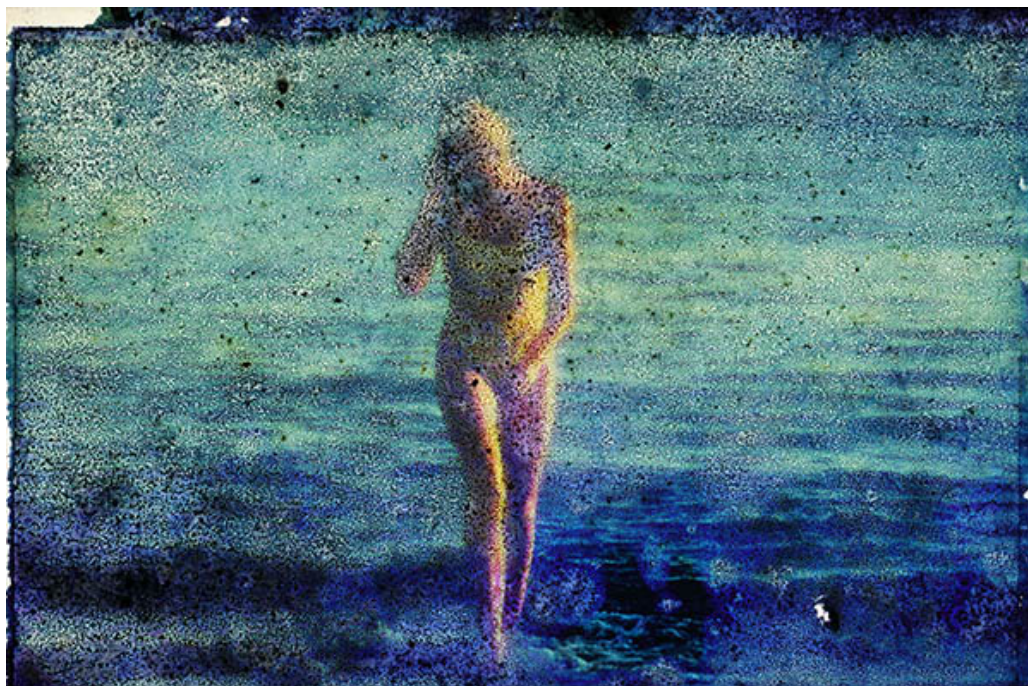


Achrome Beach, 2016



Sebastian Riemer

Achrome Beach, 2016

serie Achrome

C-print under plexi - metal frame

Image: 166 x 243 cm or 65,3 x 95,6 in

Edition of 5 ex + 2 AP

courtesy Galerie Dix9 Hélène Lacharmoise

Description:

The series Achrome is made from found slides representing film stills. The slides were very bad preserved. The artist reveals the materiality of those images whose colours are spoiled by molds.